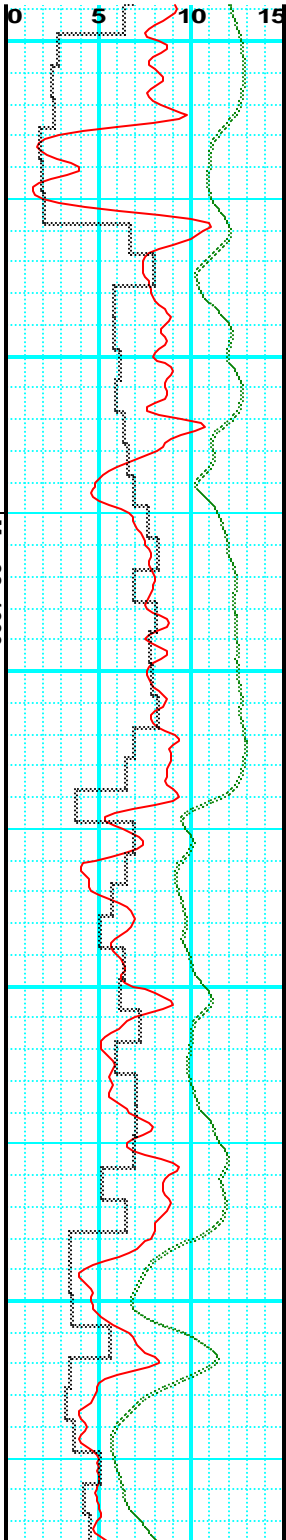
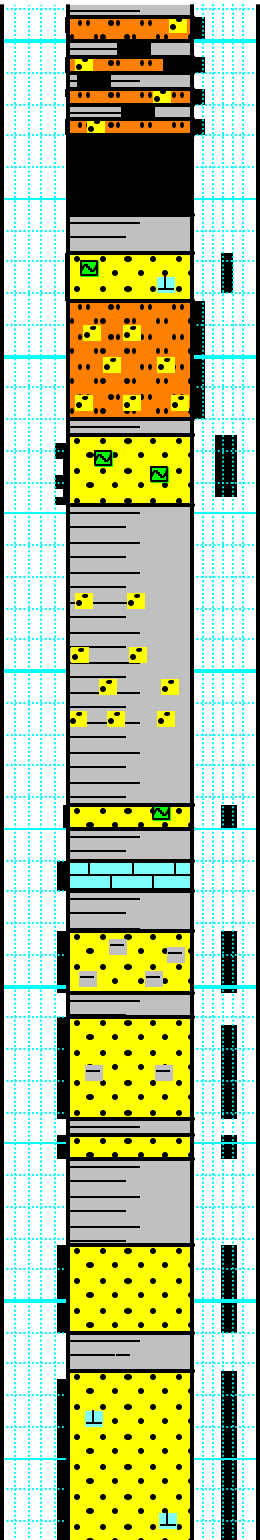


Mar 28, 1999



1310
1320
1330
1340
1350

X
X



W
W r
M a
M a
W a
M a
W a
W r

500 400 300 200 100 10 100 1000 10000

SS: SS aa + 30% SH aa.

SS: cons - lsly cons, wh - s&p, u f - u m gred, mod srt, sbang, glaucic ip, calcs, tt, trmsl - froz Qtz sd, l m - l c gred, mod srt, sbrd, ex por, occ m gred, lt Cht, gold flor, no cut + 10% SH, lt - dk gy - gysh brn, micmica, blk - pty, predly sft, ip brit.

SS: cons - lsly cons, wh - s&p, u f - u m gred, mod srt, sbang - sbrd, glaucic ip, calcs, predly tt, ip (3%) intran por, ip clr vit - froz Qtz sd, l m - l c gred, sbrd, ex por / occ lt Cht, gold flor.

SH, lt - dk gy - gysh brn, micmica, predly fis, sft, occlly sity.

SS: (60% cons, wh - s&p, m gred, w srt, calcs, tt / 40% lsly cons - unconcs, clr - froz Qtz sd / lt & dk Cht, l m - l c gred, sbang - sbrd, mod srt, g - ex 12-15%+ intran por, gold flor) + 10% SH aa.

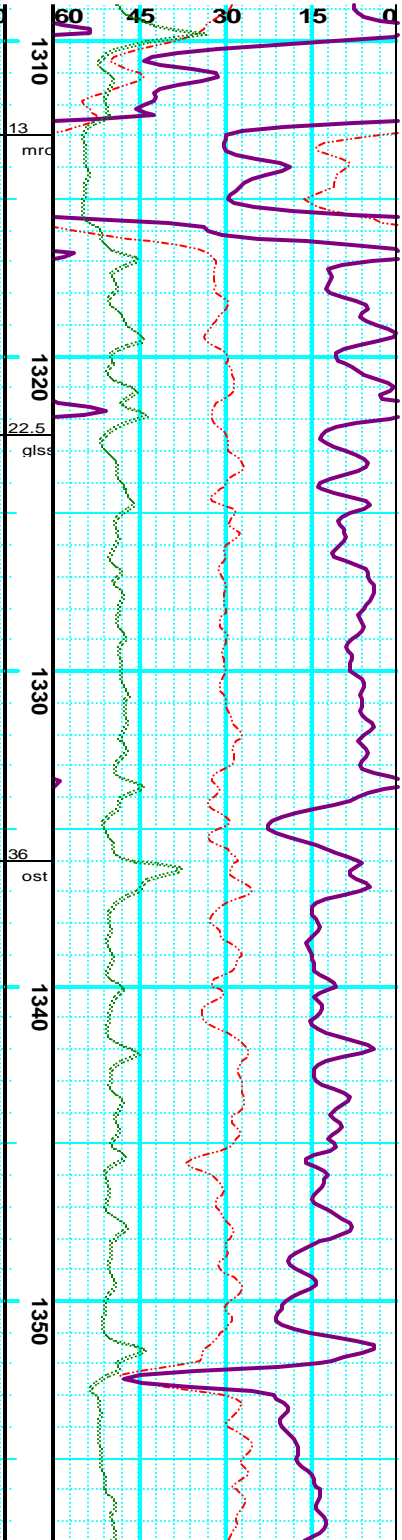
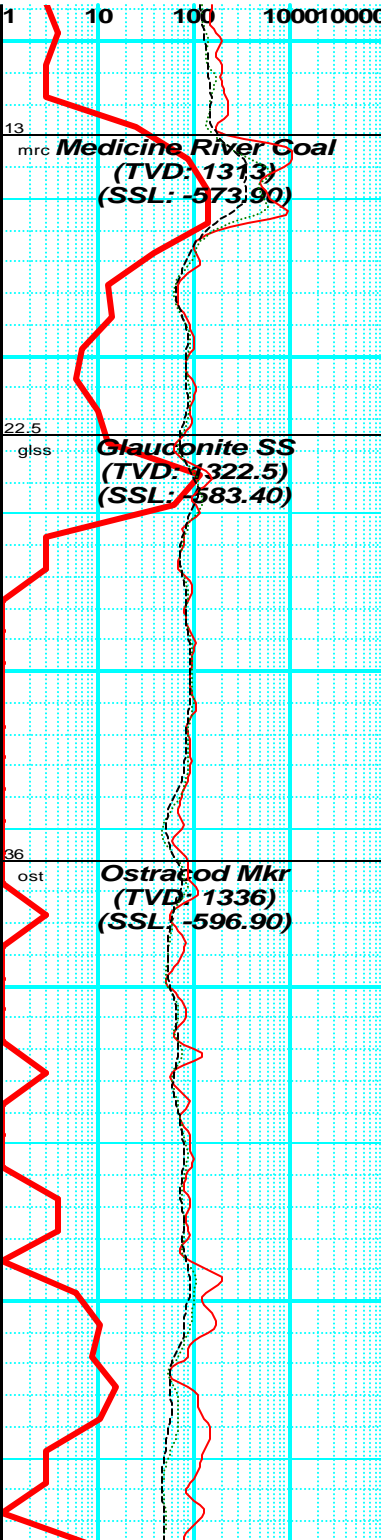
SH: lt - dk gy - gysh brn, micmica, blk - fis, frm, occ carb lam + 5% SS, cons aa + 5% Sid, m reddsh brn, lith, dns.

SH: lt - dk gy - gysh brn, micmica, predly sbfis, mnr carb lam + 15% SS, ip cons, wh - s&p, u f - u m gred, mod srt, sbang - sbrd, calcs, tt, ip, lsly cons - unconcs, clr vit - froz Qtz sd / lt Cht grs, m gred, w srt, sbang - sbrd, g - ex por, gold flor + 15% Coal, blk, shiny + 5% SLTST, v lt brn, frm

SH: m - dk gy, micmica, sbfis - pty, predly hd + 20% SS aa + 15% SLTST, v lt brn, hd + 10% Coal, blk, shiny, grsy.

Coal: blk, shiny, + 35% SH, m - dk gy, micmica, predly sbfis, hd, ip brit, occlly sity + 15% SS, predly cons, wh - s&p, u f - u m gred, mod srt, sbang - sbrd, calcs, tt, no shows, mnr lsc Qtz grs, m gred, sbrd, tr lt Cht + 5% Sid, m reddsh brn, crpxl, dns, lith.

SH: predly dk gy, micmica, sbfis - pty, frm, ip glaucic, mnr gnsh gy, sb wxy, sft + 35% SS, cons, wh - s&p, l f - u m gred mod srt, sbang - sbrd, calcs, tt, gold flor, occ + 5% Sid, m reddsh brn, crpxl, dns, lith + 5%



1310
1320
1330
1340
1350

